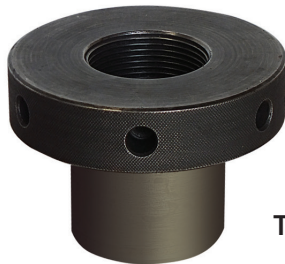


The versatile design of Lifton bolt tensioner makes the user to adapt an existing tensioner assembly to different thread sizes within its range by opting a conversion kit. This interchangeability makes it more cost effective. The kit consists of threaded puller and corresponding nut rotating socket.



Threaded Puller



Nut rotating Socket

Ordering Information

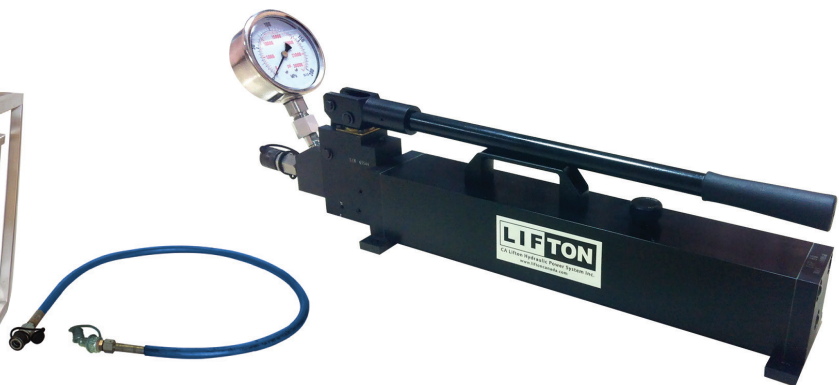
BT- (load cell number)-(thread size) - K

For example. BT-3-2"-K

Conversion kit for 2" stud to use with Load cell No.3

Stud size : 2"

Tensioner Pump



- Options for manual and air driven tensioning pumps.
- Supplied with female quick release coupler at the outlet.
- Maximum working pressure 1500 bar.
- Mounted with glycerine filled pressure gauge (1500 bar)

- Ultra high pressure hoses, maximum working pressure 1500 bar supplied with male and female couplers.
- Models are available in two different lengths.
- Has a safety factor of 3:1 on maximum working pressure

Type	Model No.	Working pressure (Bar)	Oil capacity (liter)	Weight (Kg)
Manual	LHP1500TP	1500	1.5	7
Air Driven	LAP2000TP	1500	8	25

Model No.	Working pressure (Bar)	Description
HS1500-1.5	1500	Link hose with quick connect couplings length 1.5 metres
HS1500-3	1500	Link hose with quick connect couplings length 3 metres