

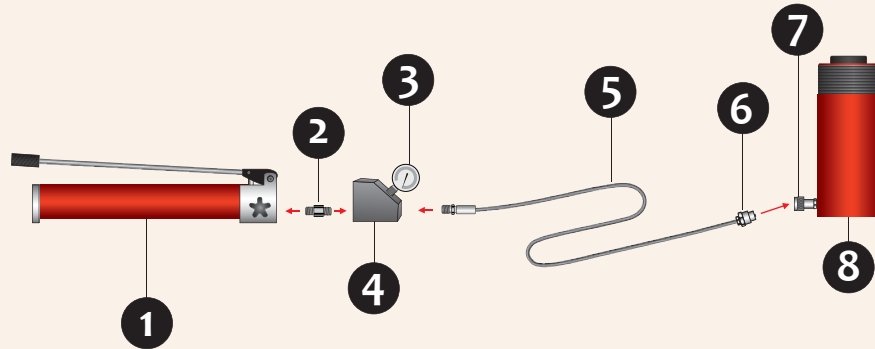
- 1 Manual Hydraulic Pump**
Which generates hydraulic pressure and flow.

Single-acting Design Connection One point lifting setup

- 2 Male Adapter**
To connect the system components

- 3 Pressure Gauge**
To Monitor system pressure

- 4 Gauge Block**
To fix the pressure gauge



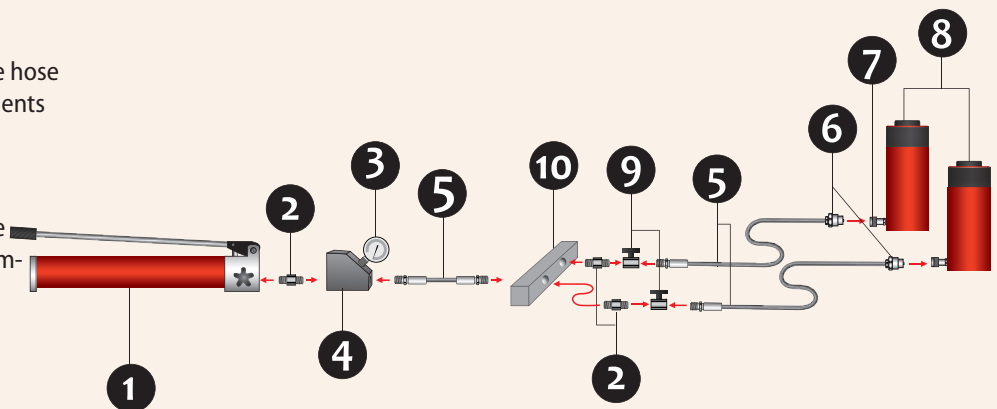
- 5 Hydraulic Hose**
Which carries hydraulic fluid

Single-acting Design Connection Two point lifting setup

- 6 Male Coupler**
For quick connection of the hose to another system components

- 7 Female Coupler**
For quick connection of the hose to another system components

- 8 Hydraulic Cylinder**
Which applies force



- 9 Needle Valve**
Which controls the flow of hydraulic fluid to or from the system

- 10 Manifold**
Which distributes hydraulic fluid to different system from one source

- 11 Load Holding Valve**
Which holds the load and controls the flow while retracting

- 12 Electric Driven Pump**
Which generates hydraulic pressure and flow.

Double-acting Design Connection Lifting Application with controlled retraction

